

Helpman LEX 6-7-RI-E-/SPEC

Specifications

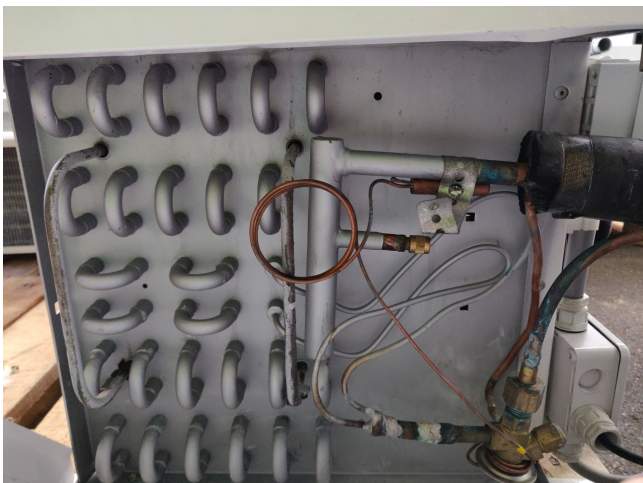
Brand	Helpman
Type	LEX 6-7-RI-E-/SPEC
kW	2.5
Refrigerant	Freon
Number of Fans	1
Fin Space in mm	7
Defrosting	Electric
m ³ /h	1500
Sizes	658x605x430mm (LxWxH)
Remarks	YOB 1998
Volume	4dm ³
Weight	25kg
Stock	1



Description

Used Helpman LEX 6-7-RI-E-/SPEC

Used but in good condition blow-through Helpman LEX 6-7-RI-E-/SPEC evaporator with electric defrosting. 1 fan, diameter 300 mm, 1500m³h, 25kg, 4dm³. "*Why choose for HOSBV? Were not only the largest used refrigeration specialist in Europe, but also, we deliver all equipment including an extensive test, warranty and industrial cleaning. Optional we can arrange shipment and export documents."



Nominal Capacities (kW)

Cooler type	R 22 frosted DT ₁	R 134a frosted DT ₁	R 404A frosted DT ₁	For reference only dry conditions DT ₁		
				R 22	R 134a	R 404A
Fin spacing 4 mm						
LEX 2 - 4	1.5	1.3	1.5	1.3	1.1	1.3
LEX 4 - 4	1.9	1.5	1.8	1.7	1.3	1.6
LEX 6 - 4	2.8	2.4	2.8	2.4	2.1	2.5
LEX 8 - 4	4.7	4.1	4.7	4.1	3.5	4.1
LEX 10 - 4	4.7	4.4	4.8	4.1	3.8	4.2
LEX 12 - 4	5.9	5.6	6.2	5.1	4.9	5.4
LEX 14 - 4	6.5	6.4	7.1	5.7	5.6	6.2
LEX 16 - 4	8.7	8.4	9.3	7.5	7.3	8.1
LEX 18 - 4	9.7	8.7	9.8	8.5	7.6	8.6
LEX 20 - 4	12.8	10.8	12.7	11.2	9.4	11.0
LEX 22 - 4	16.1	13.0	15.4	14.0	11.3	13.4
LEX 24 - 4	20.0	16.1	19.2	17.4	14.0	16.7
LEX 26 - 4	26.0	23.0	26.0	22.6	20.0	22.6
LEX 28 - 4	32.8	29.0	33.2	28.5	25.2	28.9
LEX 30 - 4	40.3	32.5	38.5	35.0	28.3	33.4

Fin spacing 7 mm

LEX 2 - 7	1.3	1.2	1.3	1.1	1.0	1.2
LEX 4 - 7	1.7	1.4	1.7	1.5	1.2	1.4
LEX 6 - 7	2.5	2.2	2.5	2.2	1.9	2.2
LEX 8 - 7	4.1	3.7	4.3	3.6	3.3	3.7
LEX 10 - 7	3.7	3.6	4.0	3.2	3.2	3.5
LEX 12 - 7	5.0	4.9	5.3	4.4	4.3	4.6
LEX 14 - 7	5.5	5.5	6.0	4.8	4.8	5.2
LEX 16 - 7	7.4	7.3	8.0	6.4	6.3	7.0
LEX 18 - 7	8.5	7.8	8.8	7.4	6.8	7.6
LEX 20 - 7	11.4	10.0	11.4	9.9	8.7	9.9
LEX 22 - 7	14.5	12.4	14.3	12.6	10.7	12.4
LEX 24 - 7	18.1	15.6	17.8	15.7	13.5	15.5
LEX 26 - 7	22.8	21.2	23.4	19.8	18.4	20.4
LEX 28 - 7	28.5	26.5	29.3	24.8	23.0	25.5